

Smoke Alarm User Manual

Model number: DH-101

Thank you for purchasing our smoke alarm. Please take a few minutes to read the user's manual thoroughly and familiarize yourself and your family with its operation. And save it for future reference.

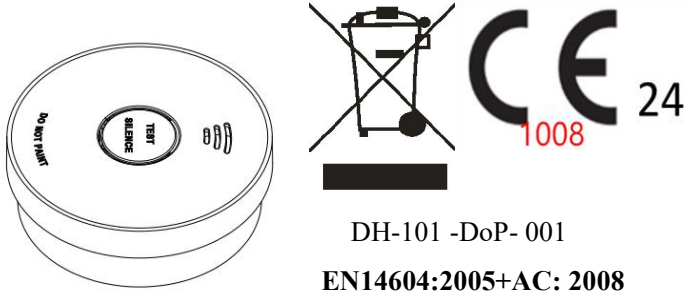


Diagram 1

Product Specifications:

- **POWER:** DC9 battery
- **OPERATIONCURRENT:** <15uA (Quiescent)
<35mA (alarm)
- **ALARM VOLUME:** >85 dB(A) at 3 meters
- **ALARM SENSITIVITY:** 0.11-0.165dB/m.
- **SAME PUSH TEST BUTTON TO ACTIVATE SILENCE (HUSH) CONTROL**
- **SILENCE TIME:** approximates 10 minutes
- **SOUND PATTERN:** BI 0.5s - pause 0.5s – BI 0.5s – pause 0.5s – BI 0.5s – pause 1.5s, with the red LED flash, repeat this alarm pattern.
- **COMPLY WITH:** EN14604:2005+AC:2008

Description:

This unit is a photoelectric 9V DC smoke alarm. The photoelectric technology, it is more sensitive in detecting slow smoldering fires which generate light smoke, little heat and may smolder for hours before bursting into flames. This smoke alarm does not contain any radioactive material.

Smoke alarm device should be installed in every room (except the bathroom and kitchen), finished attics and basements, making sure the people in the home will be able to hear and respond to the alarm sound. For minimum protection you should install an alarm on every level of the home particularly outside sleeping rooms, each alarm should be Placed in the middle of the ceiling of each room to be protected .

Typical single storey dwelling installation recommendations:
Install a smoke alarm on the ceiling inside each bedroom and in the hallway outside each separate sleeping area. If a bedroom area hallway is more than 30 feet long, install a smoke alarm at each end. If there is a basement: install a smoke

alarm on the basement ceiling at the bottom of the stairwell.

Typical multi-storey dwelling installation recommendations.
Install a minimum of one smoke alarm on each occupied level of the home.

Install a smoke alarm on the ceiling inside each bedroom and in the hallway outside each separate sleeping area. If a bedroom area hallway is more than 30 feet long, install a smoke alarm at each end install a smoke alarm at the top of a first – to- second floor stairwell.

Important Safety Information:

1. The test button accurately tests smoke alarm functions. Do not use any other test method. Test smoke alarm weekly to ensure proper operation.
2. If you're sure it isn't a really alarm, open windows or fan the air around smoke alarm.
3. Observe and follow all local and national electrical and building codes for installation.
4. This smoke alarm is designed to be used inside a single family home only. In multifamily buildings, each individual living unit should have its own smoke alarm. Do not install in non-residential buildings. As this smoke alarm is not a substitute for a complete alarm system.
5. Install a smoke alarm in every room and on every level of the home. Smoke may not reach the smoke alarm for many reasons. For example, if a fire starts in a remote part of the home, on another level, in a chimney, wall, roof, or on the other side of a closed door, smoke may not reach the smoke alarm in time to alert household members. A smoke alarm will not promptly detect a fire except in the area or room in which it is installed.
6. Smoke alarm may not alert every household member every time. The alarm horn is loud in order to alert individuals to a potential danger. However, there may be some circumstances where a household member may not hear the alarm (i.e. outdoor or indoor noise, sound sleepers, drug or alcohol usage, the hard of hearing, etc.).

If you suspect that this smoke alarm may not alert a household member, install and maintain specialty smoke alarm. Household member must hear the alarm's warning sound and quickly respond to it to reduce the risk of injury, or death that may result from fire. If a household member is hard of hearing, install special smoke alarm with lights or vibrating devices to alert occupants.

7. Smoke alarm can only sound their alarm when they detect smoke or detect combustion particles in the air. They do not sense heat, flame, or gas. This smoke alarm is designed to give audible warning of a developing fire. However, many fires are fast - burning, explosive, or intentional, and others are caused by carelessness or safety hazards. In such circumstances, Smoke may not reach the alarm **QUICKLY ENOUGH** to ensure safe escape. Therefore the installation of smoke alarm is not a substitute for practicing fire safety in the home
8. Smoke alarm have limitations. This smoke alarm is not foolproof and is not warranted to protect lives or property from fire. Smoke alarm are not a substitute for insurance. Homeowners and renters should have adequate insure to protect their lives and property. In addition, it is possible for the smoke alarm to fail at any time. For this reason, you must test the smoke alarm weekly and replace them every 10 years.

Battery Connections:

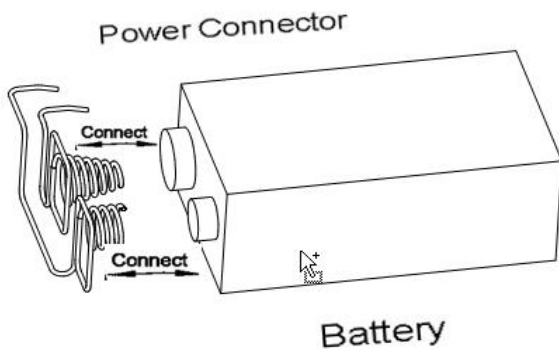


Diagram 2

Battery Specification:

Rating voltage: DC 9V (Carbon zinc; Alkaline,)

Carbon Zinc Battery: 1 year

Gold Peak: GP1604GLF 6F22 (GP International., LTD)

Alkaline Battery: 5 years

Raymax : 6LR61; (Zhejiang Mustang Battery Co., Ltd)

Replace Battery:

1. Turn the alarm body counterclockwise and take out the alarm body from the bracket.
2. Take out the old battery connect the new battery to power connector.
3. Fix the battery into battery box, fit alarm body on bracket and turn the alarm body clockwise (see Diagram 3).
4. Test smoke alarm using test button. The sound pattern is 3 short beeps-pause 1.5 seconds, repeat it. If there's no sound output, it means that the smoke alarm is faulty or the installing operation is wrong, and you can get helps from the section: "trouble shooting".

WARNING: Test the alarm for correct operation using the test facility whenever the battery is replaced.

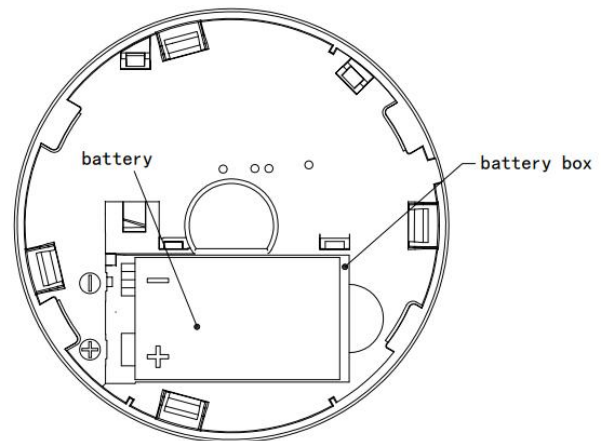


Diagram 3

Do Not Install Smoke alarm in the Following Places:

1. Near appliances or areas where normal combustion regularly occurs (kitchens, near furnaces, hot water heaters). Use specialized smoke alarm with unwanted alarm control for such locations.
2. In locations with high humidity, like bathrooms or near dishwashers or washing machines. Install at least 10 feet away from these areas.
3. Near air returns or heating and cooling supply vents. Install at least 3 feet away from these areas. The air could blow smoke away from the detector, interrupting its alarm.
4. In rooms where temperatures may fall below 0°C or rise above 40°C, or in humidity higher than 95%. These conditions will reduce battery life or cause a fault alarm.
5. In extremely dusty, dirty, or insect - infested areas as ingress of these interfere with smoke alarm operation.

Operation:

Testing

Power on the alarm is mounted on bracket .Test the unit weekly to ensure proper operation by pressing the test button for at least 3 seconds, this will sound the alarm if the electronic circuitry, horn and battery are working properly. If no alarm sounds, the battery may be depleted or another problem, refer to “Trouble shooting” section for a solution.

DO NOT use an open flame to test your alarm, you could damage the alarm or ignite combustible materials and start a fire.

CAUTION: Due to the loudness (85 decibels) of the alarm, always stand an arms-length away from the unit when testing.

Test the alarm weekly to ensure proper operation. Erratic or low sound coming from your alarm may indicate a defective alarm. Refer to “Trouble shooting” section for a solution.

NOTE: WEEKLY TESTING IS REQUIRED.

LED indicators

- 1: When the alarm is running normally, the red LED will flash 1 time per 40 seconds.
- 2: When the battery failure or low battery is detected, the alarm will “chirp” 1 time and with a corresponding red LED flashing 1 time per 40 seconds.
- 3: When the unit is fault, the alarm will “chirp” 1 time per 40 seconds.
- 4: When the unit is running in the silence mode, the red LED will flash once every 8 seconds.

Note: When the units chirp 1 time per 40 second, Press the test button, it will be paused for this warning tone for 8 hours. It can still normally detect smoke during this period, it only remove nuisance warning tone.

Alarm silence (silence mode)

During the unit is alarming, push the test button, it will be paused the unit alarming for approx 10 minutes. The red LED will flash once every 8 seconds, it indicates the smoke alarm is running into the silence mode. Smoke alarms are designed to minimize nuisance alarms. Combustion particles from cooking may set off the alarm if the alarm is located close to the cooking area. Large quantities of combustible particles are generated from spills or when grilling/frying. Using the fan on a range hood that vents to outside (non-recirculating type) will also help remove these combustible particles from the kitchen. The alarm silence (test button) is extremely

useful in a kitchen area or other areas prone to nuisance alarms.

The silence feature is to be used only when a known alarm condition, such as smoke from cooking activates the alarm.

The smoke alarm will automatically reset after approximately 10 minutes, if after this period, particles of combustion are still present, the alarm will sound again.

The alarm silencer (silence mode) can be repeatedly until the air has been cleared of the condition causing the alarm.

CAUTION: Before using the alarm silence (silence), identify the source of the smoke and be certain a safe condition exists.

NOTE: WEEKLY TESTING IS REQUIRED.

DANGER: If the alarm sounds, and it is not being tested, it means the unit is sensing smoke, **THE SOUND OF THE ALARM REQUIRES YOUR IMMEDIATE ATTENTION AND ACTION.**

Maintenance and Cleaning:

In addition to weekly testing, the alarm requires yearly battery replacement and periodic cleaning to remove dust, dirt, and debris.

Clean the alarm at least once a month to remove dust, dirt, or debris. Always turn off power before cleaning.

Use a vacuum cleaner with a soft brush, vacuum all sides and covers of smoke alarm. Be sure all the vents are free of debris. Use a damp cloth to clean the alarm’s cover.

This alarm has a low battery monitor which will cause the alarm to “chirp” and at the same time as the red LED flash approximately every 40 seconds for a minimum of 30 days when the battery gets low. Replace the battery when this condition occurs. Please refer to “**REPLACE BATTERY**”.

If there is a defective battery or other failures, you can refer to “Trouble shooting” for solution, if there are still failures during warranty, you can return to your retailer.

IMPORTANT: Do not attempt to remove the cover to clean inside. This will void the warranty.

Repair:

Caution: Do not attempt to repair the alarm. This will void your warranty. If the alarm is not operating properly, and is still under warranty, return it to the original place of purchase. Pack it in a well-padded carton, and ship to the original place you buy. If the alarm is no longer under warranty, replace it immediately with a comparable alarm.

Practice Fire Safety by developing an

escape plan:

If the alarm sounds, and you have not pushed the test button, it is a warning of a dangerous situation, your immediate response is necessary. To prepare for such occurrences, develop family escape plans, discuss them with all household members, and practice them regularly.

- 1. Familiarize everyone to the sound of a smoke alarm and explain what the sound means. And train them to quickly leave the home when they hear it.
- 2. Determine two exits from each room and an escape route to the outside from each exit.
- 3. Teach all household members to touch the door and use an alternate exit when the door is hot. Instruct them not to open the door if the door is hot.
- 4. Teach household members to crawl along the floor to stay below dangerous smoke, fumes and gases.
- 5. Determine a safe meeting place for all members outside the building.
- 6. Practice this plan with your family at least yearly.

Trouble shooting:

DO NOT disconnect battery to quiet an unwanted alarm. This will remove your protection. Fan the air or open a window to remove smoke or dust.

Problem	Cause and Remedy
Smoke alarm does not sound when tested. NOTE: Push test button for at least five seconds while testing!	<ul style="list-style-type: none">1. Fit the alarm on the bracket and turn the alarm body clockwise, until matching well on the bracket.2. Clean smoke alarm. Please refer to the “maintenance and cleaning” section.3. If problems persist and the unit is still under warranty, you can return to your retailer.4. If the unit is out of warranty, please replace with a new alarm.
The alarm “chirp” with red LED flashes once every 40 seconds.	<ul style="list-style-type: none">1. The battery is depleted, please replace battery, and refer to “replace battery” section.
Smoke alarm chirp occurs every 40 seconds (alarm goes into fault mode) .	<ul style="list-style-type: none">1. Clean smoke alarm. Please refer to the “maintenance and cleaning” section.2. Replace smoke alarm if the

	problem persists.
Smoke alarm sounds unwanted alarm intermittently or when residents are cooking, taking showers, etc.	<ul style="list-style-type: none">1. Clean smoke alarm. Please refer to the “maintenance and cleaning” section.2. Move smoke alarm to new location.
The alarm sounds different from it is used to. It starts and stops.	<ul style="list-style-type: none">1. Clean smoke alarm. Please refer to the “maintenance and cleaning” section.2. If the problem persists during warranty, you can return to your retailer.3. If the unit is out of warranty , please replace with a new alarm.

What to Do in Case of Fire:

- 1. Do not be panic; stay calm.
- 2. Make sure small children and the elderly in the home are alerted
- 3. Leave the building as quickly as possible. Do not stop to get dressed or to pick up valuables, you **DO NOT HAVE TIME!**
- 4. Before opening inside doors look for smoke seeping around them and feel with the back of your hand. If the door is hot, use an alternate exit. If you feel it’s safe open the door slowly and be prepared to close it immediately if smoke or heat rush in.
- 5. If you must travel through smoke to reach the exit, crawl along the floor under the smoke where the air is clearer.
- 6. Meet at a pre-arranged meeting place outside the building.
- 7. Call the fire department form outside the building.
- 8. Do not go back inside a burning building. Wait for the fire department to arrive.

Note: These guidelines will assist you in the event of a fire, however, to reduce the chance that fires will start, practice fire safety rules and prevent hazardous situations.

Installation Instructions:

- Locate the first alarm in the immediate area of the bedrooms. Try to monitor the exit path as the bedrooms are usually farthest from the exit. If more than one sleeping area exists, locate additional alarm in each sleeping area.
- Locate additional alarm to monitor any stairway as stairways act like chimneys for smoke and heat.

- Locate at least one alarm on every floor level.
- Locate an alarm in every bedroom.
- Locate an alarm in every room where electrical appliances are operated (i.e. portable heaters or humidifiers).
- Locate an alarm in every room where someone sleeps with the door closed. The closed door may prevent an alarm not located in that room from waking the sleeper.
- Smoke, heat, and combustion products rise to the ceiling and spread horizontally. Mounting the smoke alarm on the ceiling in the center of the room places it closest to all points in the room. Ceiling mounting is preferred in ordinary residential construction.
- When mounting an alarm on the ceiling, locate it at a minimum of 20" (50cm) from the side wall (Refer to Diagram 4).

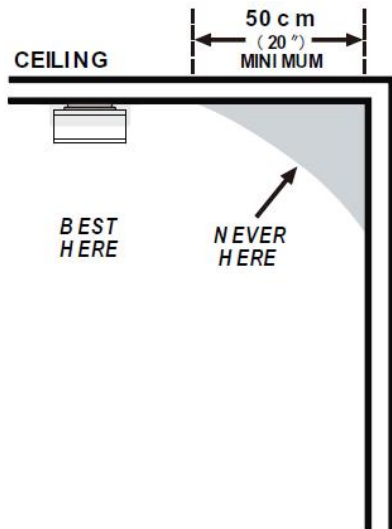


Diagram 4

- Put smoke alarm at both ends of a bedroom hallway or large room if the hallway or room is more than 9.1 m (30 ft) long.
- Smoke alarm in rooms with ceiling slopes greater than 1m in 8 m horizontally shall be located on the high side of the room. Install a smoke alarm on sloped, peaked or cathedral ceilings between 500mm and 1500mm from the highest point of the ceiling. (See Diagram 5).

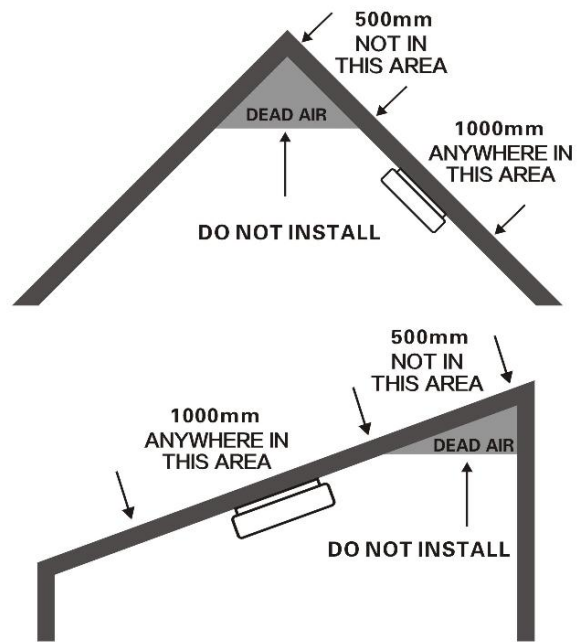


Diagram 5

- For single floor plan and multiple floor plan. Please refer to diagram 6.

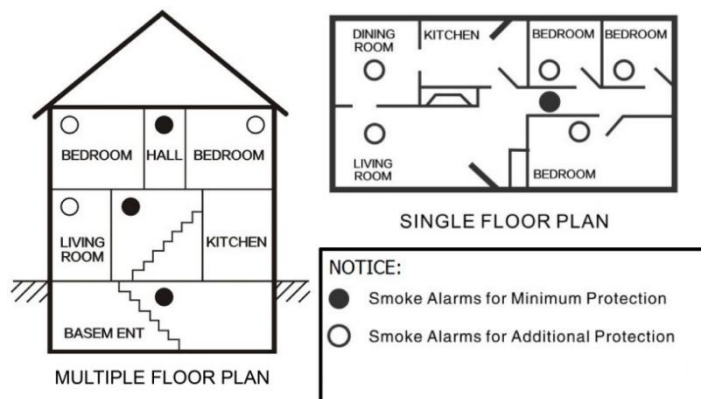


Diagram 6

Installation:

- Take off the bracket from the alarm body.
- Hold the bracket in the installation position, as specified in the Installation Instructions, mark installation holes of the bracket with pencil.
- Drill the two marked installation holes. With a 3/16 inch (5mm) drill bit. Tap the two plastic plugs into holes with hammer.
- Mount the bracket to the ceiling by inserting and tightening the supplied screws into plastic plugs (Refer to Diagram 7).
- Fit the alarm on the bracket and turn the alarm body clockwise, until fully inserted on the bracket.

- Press the button to test the unit. The alarm should then sounds 3 beeps – 1.5 seconds pause, and will repeat until the button is released, if no sound, it indicates a defective alarm, refer to the “Trouble shooting” section for a solution or return to your retailer during warranty.
- If you have any questions on installation, you can contact your retailer.

WARNING:

To prevent injury, this unit must be securely attached to the ceiling in accordance with the installation instructions.

Warranty Information:

Company warrants to the original consumer.

Purchase each new smoke alarm to be free from defects in material and workmanship under normal use and service for a period of 3 years from the date of purchase. This warranty does not cover damage resulting from accident, misuse or abuse or lack of reasonable care of the product.

In no case shall company be liable for any incidental or consequential damages for breach of this or any other warranty express or implied, whatsoever. The bad product can be mailed to the following address with a detail explanation of problem.

Installation diagram:

Diagram 7

Manufacturer:

Hangzhou Deheng Smart Electric Company LTD

ADDRESS:

**NO.161 Baizhang RD, Luzhu Twon,
Fuyang, Hangzhou city ,Zhejiang, China,**

TEL: +8657163500975

FAX: +8613675868500 Mr Chen

E-MAIL: admin@dhelectronic.cn

