

·If the length of the room or the hall is beyond 30 feet, you need install several alarms in the hall.

·Smoke alarms in rooms with ceiling slopes higher than 1m in 8m horizontally shall be located on the high side of the room. Install a smoke alarm on sloping, peak or cathedral ceiling between 500mm and 1500mm from the highest point of the ceiling. (See Diagram 2).

·For single storey dwelling and multiple storey dwelling, please refer to Diagram 3

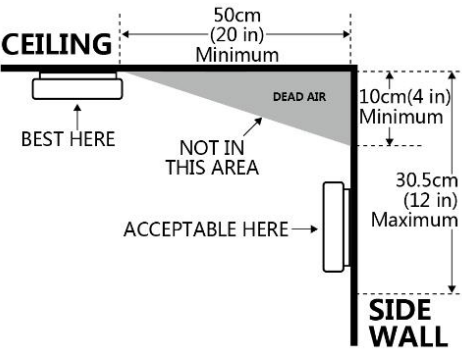


Diagram 1

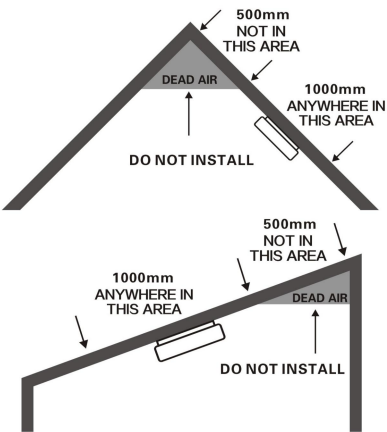


Diagram 2

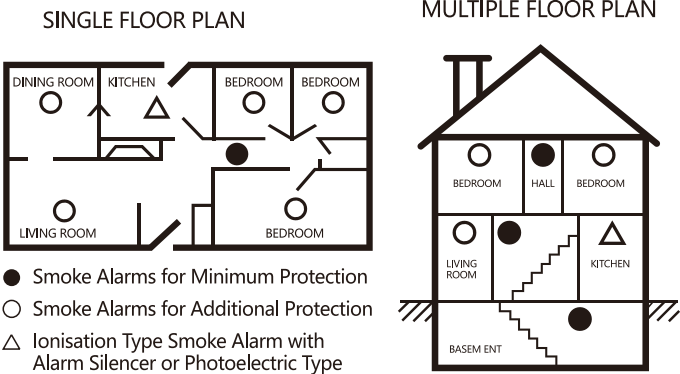


Diagram 3

Installation Steps (Please refer to Diagram 4)

- Remove the fixing plug from the mounting plate (if necessary, use a screw driver for this);
- Place the bracket on the desired installation place and mark the installation holes on the wall with pencil.
- Bore two installation holes with diameter 5mm with electric drill.
- Strike the two plastic plugs into holes with hammer.
- Insert the screws into bracket and tighten them firmly into plastic plugs
- Fit the alarm on the bracket and turn the alarm body clockwise, until matching well on the bracket.
- Insert the fixing plug into the hole between the mounting plate and the smoke alarm to fix your alarm.
- Press the button for test. If no sound, please replace a new one.

If you have any questions on installation, you can contact your retailer.

WARNING: To prevent injury, this unit must be securely attached to the ceiling in accordance with the installation instructions.

Installation Sketch Map

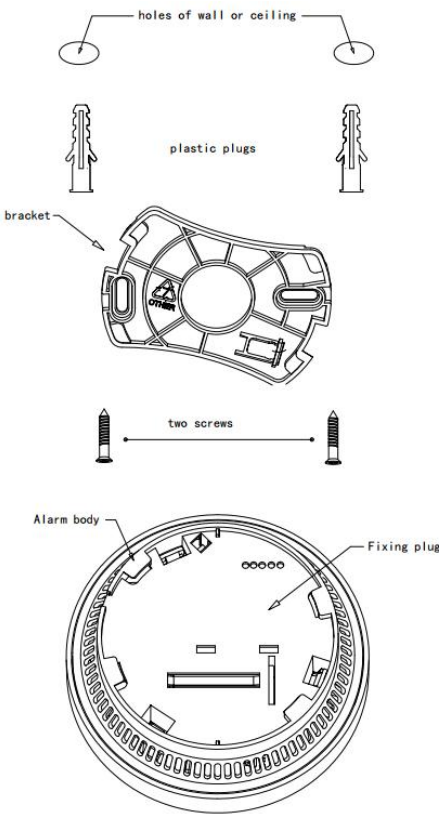


Diagram 4

Maintenance and Cleaning

In addition to weekly testing, the alarm requires periodic clean to remove dust, dirt and debris. Clean the alarm at least once a month. Vacuum all sides of smoke alarm by a vacuum cleaner with the soft brush. Be sure all the vents are free of debris. Use a damp cloth to clean the alarm's cover.

This alarm has a low battery voltage monitor which will cause the alarm to chirp and at the same time the red LED flashes approx every 40 seconds for a

minimum of 30 days when the battery voltage gets low. Replace a new smoke alarm

IMPORTANT: Do not attempt to remove the cover to clean inside. This will affect warranty.

Repair

DO NOT attempt to repair the alarm. It will affect your warranty.

If the alarm is not operating properly and is still under warranty, return it to the original place you bought by packing it in a well-padded carton.

If the alarm is no longer under warranty, replace it immediately with a comparable alarm.

Practice Fire Safety

If the detector pulsed alarms constantly and you have not pushed the test button, it is warning of a dangerous situation, your immediate response is necessary. Please prepare for such occurrences by developing family escape plans with all household members and practice them regularly.

- 1: Expose everyone to the sound of a smoke alarm and explain what the sound means.
- 2: Determine two exits of each room and an escape route to the outside from each exit.
- 3: Teach all household members to touch the doors before opening them. Instruct them not to open the door and use an alternate exit when the door is hot.
- 4: Teach household members to crawl along the floor to stay below dangerous smoke, fumes and gases.
- 5: Determine a safe meeting place for all members outside the building.

What to do in case of fire

1. Do not be panic and stay calm.
2. Leave the building as quickly as possible. Touch doors to feel if they are hot before opening them. Use an alternate exit if necessary. Crawl along the floor and do stop to collect anything.
3. Meet at a pre-arranged meeting place outside the building.
4. Call the fire department from outside the building.
5. Do not go back inside a burning building. Wait for the fire department to arrive.

Note: These guidelines will assist you in the event of a fire, however, to rise the rate of safe escape, please practice fire safety rules and prevent hazardous situations.

Warranty Information

Company warrants to the original consumer.

New smoke alarm free from defects in material and workmanship and under correct operation has a period of 3-year warranty from the date of purchase. This warranty does not cover damage resulting from accident, misuse, abuse or lack of reasonable care of the product.

In no case shall company be liable for any incidental or consequential damages by breach of this or any other warranty expressed or implied, whatsoever.

The bad product can be mailed to the following address with a detail explanation of problem.